



BOSTON REED COLLEGE

Math Assessment

Boston Reed College

Math Assessment

1. Subtract: $\begin{array}{r} 1.2 \\ -0.9 \\ \hline \end{array}$

- A. 3
- B. .03
- C. .003
- D. .3

2. Subtract: $\begin{array}{r} 5008 \\ -4729 \\ \hline \end{array}$

- A. 279
- B. 389
- C. 1279
- D. 1001

3. Multiply: $\begin{array}{r} 4.5 \\ \times 34 \\ \hline \end{array}$

- A. .153
- B. 1.53
- C. 15.3
- D. 153

4. Divide: $3045 \div 59$

- A. 51 R36
- B. 50 R9
- C. 51 R5
- D. 51 R46

Boston Reed College

Math Assessment

5. **Add:** $\frac{2}{3} + \frac{1}{4}$

- A. $\frac{1}{4}$
- B. $\frac{3}{7}$
- C. $\frac{3}{4}$
- D. $\frac{11}{12}$

7. **Multiply:** $\frac{2}{3} \times \frac{3}{8}$

- A. $\frac{1}{4}$
- B. $\frac{5}{24}$
- C. $\frac{5}{11}$
- D. $\frac{9}{16}$

6. **Subtract:** $\frac{4}{5} - \frac{1}{3}$

- A. $\frac{7}{15}$
- B. $\frac{5}{8}$
- C. $1 \frac{2}{15}$
- D. $1 \frac{1}{2}$

Boston Reed College

Math Assessment

DIRECTIONS: Refer to the calendar to answer the next question.

January						
S	M	T	W	T	F	S
	1	2	3	4	5	6
7	8	9	10	11	12	13
14	15	16	17	18	19	20
21	22	23	24	25	26	27
28	29	30	31			

February						
S	M	T	W	T	F	S
				1	2	3
4	5	6	7	8	9	10
11	12	13	14	15	16	17
18	19	20	21	22	23	24
25	26	27	28			

8.. Robert gets paid every two weeks. He received a paycheck on January 19. When will he receive the next paycheck?

- A. January 5
- B. January 19
- C. February 2
- D. February 16

Boston Reed College

Math Assessment

DIRECTIONS: Refer to the time sheet to answer the next two questions.

TIME SHEET					
HANLON, Mary			March 9		
Employee			Pay Period Ending		
	IN	OUT	IN	OUT	Total Daily Hours
Monday	9:00 a.m.	12:00 p.m.	4:00 p.m.	8:00 p.m.	
Tuesday	10:00 a.m.	2:00 p.m.	--	--	
Wednesday	10:00 a.m.	3:00 p.m.	--	--	
Thursday	10:30 a.m.	3:30 p.m.	--	--	
Friday	9:00 a.m.	12:00 p.m.	4:00 p.m.	8:00 p.m.	
Saturday	9:00 a.m.	2:00 p.m.	--	--	
Sunday	--	--	--	--	

9. How many hours did Mary work on Monday?

- A. 4 hours
- B. 7 hours
- C. 8 hours
- D. 9 hours

10. What time did Mary's second shift begin?

- A. 9:00 a.m.
- B. 10:00 a.m.
- C. 4:00 p.m.
- D. 8:00 p.m.

Boston Reed College
Math Assessment

A



B



C



D



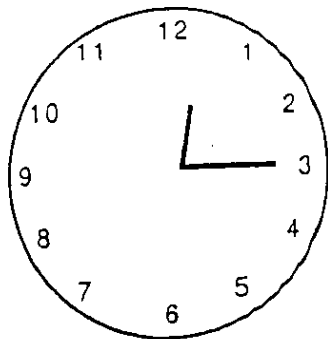
11. Which group of coins is the correct change for a dime?

- A. Group A
- B. Group B
- C. Group C
- D. Group D

Boston Reed College

Math Assessment

DIRECTIONS: Refer to the clock to answer to the next two questions.



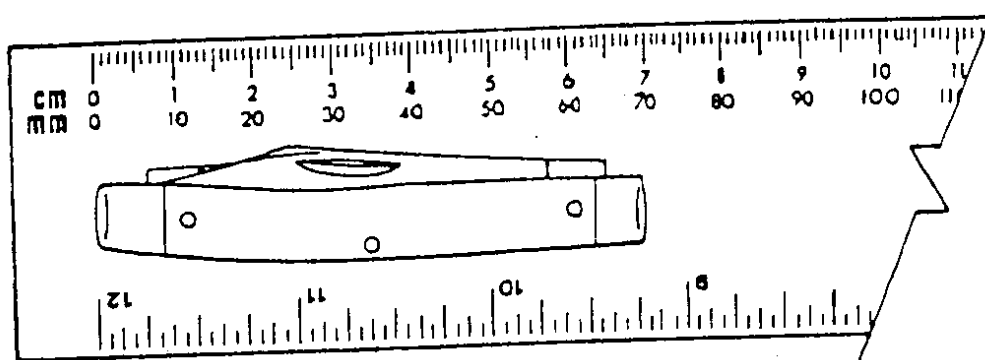
12. Marie has a job interview at 3:30 p.m. How long is it until her appointment?

- A. 1 hour and 25 minutes
- B. 3 hours and 15 minutes
- C. 3 hours and 45 minutes
- D. 4 hours and 15 minutes

13. What will the time be in four hours and twenty-five minutes?

- A. 4:15
- B. 4:40
- C. 6:25
- D. 6:30

DIRECTIONS: Refer to the ruler to answer the next two questions.



14. How long is the knife in millimeters?

- A. .07 millimeters
- B. .7 millimeters
- C. 7.0 millimeters
- D. 70 millimeters

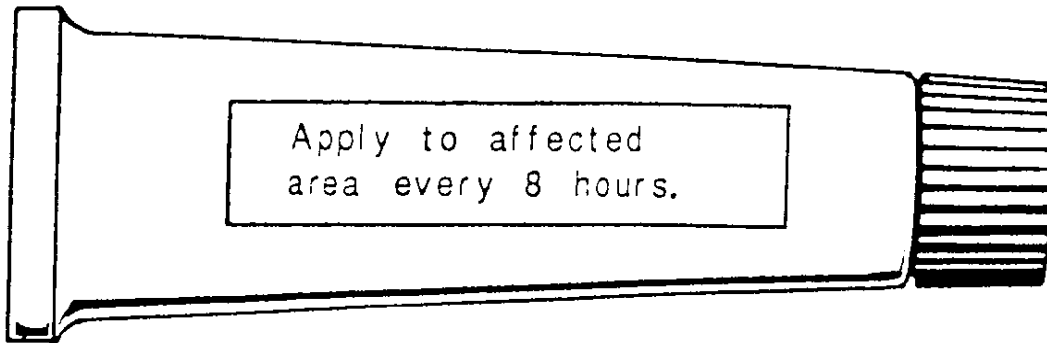
15. How long is the knife in centimeters?

- A. $2 \frac{13}{16}$ centimeters
- B. 7 centimeters
- C. $10 \frac{13}{16}$ centimeters
- D. 70 centimeters

Boston Reed College

Math Assessment

DIRECTIONS: Read the medicine label to answer the next two questions.



16. The medicine was applied at 10:15 a.m. When is the next time it should be applied?

- A. 2:15 p.m.
- B. 6:15 p.m.
- C. 7:15 p.m.
- D. 8:15 p.m.

17. How often should a person use this medicine?

- A. Every hour
- B. When he needs it.
- C. 3 times a day
- D. 4 times a day

Boston Reed College

Math Assessment

18. Carol bought a shirt for \$7.38, including tax. What change should she get from a ten-dollar bill?

- A. \$2.62
- B. \$2.72
- C. \$3.38
- D. \$3.62

19. A used car can be purchased by paying \$36.75 a month for 24 months. What is the total cost of the car?

- A. \$ 88.00
- B. \$782.00
- C. \$872.00
- D. \$882.00

20. You work 4 hours a day, 4 hours a week at a hospital. Your hourly wage is \$5.55. How much will you earn in a week?

- A. \$28.83
- B. \$22.20
- C. \$88.80
- D. \$44.40

21. A bicycle and its shipping box weigh $45 \frac{3}{4}$ pounds. When it is empty, the box weighs $7 \frac{1}{2}$ pounds. What is the weight of the bicycle?

- A. $37 \frac{1}{4}$ pounds
- B. $38 \frac{1}{4}$ pounds
- C. $38 \frac{1}{2}$ pounds
- D. $39 \frac{1}{2}$ pounds

Boston Reed College

Math Assessment

DIRECTIONS: Refer to the bus schedule to answer the next two questions.

BUS SCHEDULE	
PLAINVILLE TO STOCKTON	
Leave Plainville	Arrive Stockton
6:15 a.m.	7:10 a.m.
7:30 a.m.	8:45 a.m.
8:10 a.m.	9:25 a.m.
9:05 a.m.	10:15 a.m.
11:35 a.m.	12:40 p.m.
1:20 p.m.	2:35 p.m.
3:15 p.m.	4:20 p.m.
5:00 p.m.	6:05 p.m.
6:30 p.m.	7:45 p.m.

**22. You leave Plainville at 9:05 a.m.
How long does it take you to get
to Stockton?**

- A. 55 minutes
- B. 1 hour, 5 minutes
- C. 1 hour, 10 minutes
- D. 1 hour, 15 minutes

**23. How often do buses from Plainville
arrive in Stockton?**

- A. Every hour
- B. Every two hours
- C. Every 35 minutes
- D. At varying times throughout
the day.

Boston Reed College

Math Assessment

DIRECTIONS: Study the order form to answer the next two questions.

ORDER FORM					
QTY	ITEM	DESCRIPTION	COLOR	UNIT PRICE	TOTAL PRICE
50	4866	3/4" elbow joint		.37	\$18.50
25	4077	3/4" T-joint		.51	12.75
3	8566	towel rack	white	8.16	24.48
3	8566	towel rack	beige	8.16	24.48
				SUBTOTAL	80.21
				7% tax	5.61
Ace Plumbing Supply Company 1292 Main St Lindsay, CA 93612 (209) 486-1220				Total	\$85.82

24. How many T-joints were ordered?

- A. 25
- B. 37
- C. 50
- D. 4866

25. How much does one beige towel rack cost?

- A. \$ 3.00
- B. \$ 8.16
- C. \$ 12.75
- D. \$ 24.48

Boston Reed College

Math Assessment

DIRECTIONS: Study the price sign to answer the next two questions.

Comparing Regular and Sale Prices

Item	Regular Price	Sale Price
Jeans	\$12.00	\$ 9.60
Tennis Shoes	\$18.00	\$13.60
Jackets	\$24.00	\$18.00
Socks	\$ 1.50	\$.75

26. If you purchased four pairs of socks at the sale price, how much would you save off the regular price?

- A. \$.75
- B. \$ 1.50
- C. \$ 3.00
- D. \$ 4.50

27. What is the discount when you purchase socks at the sale price?

- A. 25%
- B. 33%
- C. 50%
- D. 75%

Boston Reed College

Math Assessment

DIRECTIONS: Refer to the three dryer ads to answer the next two questions.

LEARS ELECTRIC DRYER

SPECIAL 1/2 OFF

REGULARLY \$228.60



WOODS ELECTRIC DRYER

SPECIAL 1/3 OFF

REGULARLY \$228.60



JONES ELECTRIC DRYER

SPECIAL 1/4 OFF

REGULARLY \$228.60



28. If you purchased the electric dryer at Lears, what would be your amount of savings?

- A \$ 11.43
- B \$104.30
- C \$114.30
- D \$228.60

29. If you purchased the electric dryer at Woods, what would be your amount of savings?

- A \$ 76.20
- B \$ 79.53
- C \$ 86.20
- D \$152.40

Boston Reed College

Math Assessment

DIRECTIONS: Read the information about bank service charges to answer the next question.

REGULAR MONTHLY SERVICE CHARGES

FOR INDIVIDUAL CHECKING ACCOUNTS

By maintaining a minimum balance of \$200 or an average balance of \$600 or more for the month, you can avoid monthly service charges altogether. If your daily balance is less than \$200 and your average balance falls below \$600, all you pay is 85¢ for the month plus 10¢ per check processed during that month.

- 30. Jerry Green's checking account balance was \$173.56 on March 3, and he did not have an average monthly balance of \$600 for March. He wrote 18 checks that month. What was his checking account service charge for March?**

- A \$.85
- B \$1.65
- C \$2.65
- D \$2.85

Boston Reed College

Math Assessment

DIRECTIONS: Study the shipping chart to answer the next two questions.

When the shipping cost is based on weight, you must know how far the company is from your town or city in order to determine shipping costs. The distances are listed as zones in the chart shown below

ROBERT'S SHIPPING AND HANDLING CHARGES FOR ORDERS SHIPPED BY USPS/UPS

SHIPPING WEIGHT	APPROXIMATE DISTANCE FROM CATALOG MERCHANDISE DISTRIBUTION CENTER							
	Local Zone	Zones 1 and 2 Not over 150 Miles	Zone 3 151 to 300 Miles	Zone 4 301 to 600 Miles	Zone 5 601 to 1000 Miles	Zone 6 1001 to 1400 Miles	Zone 7 1401 to 1800 Miles	Zone 8 Over 1800 Miles
1 oz. to 8 oz.	\$.69	\$.73	\$.73	\$.75	\$.80	\$.83	\$.87	\$.91
9 oz. to 15 oz.	1.07	1.07	1.09	1.12	1.15	1.19	1.24	1.29
1 lb. to 2 lbs.	1.38	1.38	1.42	1.47	1.53	1.54	1.61	1.69
2 lbs. 1 oz. to 3 lbs.	1.47	1.47	1.52	1.61	1.70	1.84	1.97	2.14
3 lbs. 1 oz. to 5 lbs.	1.57	1.57	1.65	1.78	1.91	2.13	2.34	2.58
5 lbs. 1 oz. to 10 lbs.	1.80	1.80	1.93	2.14	2.45	2.82	3.18	3.63
10 lbs. 1 oz. to 15 lbs.	2.15	2.17	2.39	2.77	3.22	3.80	4.40	5.11
15 lbs. 1 oz. to 25 lbs.	2.85	3.15	3.48	3.97	4.65	5.75	6.72	7.85
25 lbs. 1 oz. to 40 lbs.	3.47	3.97	4.47	5.10	6.61	7.70	9.22	10.88
40 lbs. 1 oz. to 55 lbs.	4.17	5.04	5.55	6.84	7.82	10.33	12.52	14.44
55 lbs. 1 oz. to 70 lbs.	4.67	6.05	6.97	8.37	10.38	12.95	15.82	18.34

31. Linda lives in Zone 5. Her order weighs 1 lb. 2 oz. How much will she pay for shipping charges?

- E. \$1.47
- F. \$1.54
- G. \$.80
- H. \$1.53

32. You purchased a small desk weighing 27 lbs., a lamp weighing 5 lbs. 13 oz., and a chair weighing 12 lbs. 9 oz. How much will you pay for shipping charges if you live in Zone 3?

- A. \$5.55
- B. \$5.04
- C. \$6.97
- D. \$6.84